

Climate Action & Mitigation

Environment Climate Action Team

Frank Burke - Climate Action
Coordinator

Clare Kelly – Climate Action Officer

Clinton Donovan – Community
Climate Action Officer



National Climate Objective

*“pursue and achieve, by no later than the end of the year 2050, the transition to a climate resilient, biodiversity rich, environmentally sustainable, and **climate neutral economy**”*
(legally binding)



Climate Action Plan (CAP) – Statutory Requirement

The Climate Action and Low Carbon Development Amendment Act 2021 prescribes that:

14B (1) Each local authority shall prepare and make a plan relating to a period of five years (... referred to as a 'local authority climate action plan') which shall specify the mitigation and the adaptation measures to be adopted by the local authority'

CAP – what will it achieve?

The CAP will outline the pathway for Wexford County Council to :

- reduce our Greenhouse Gas Emissions (GHG) by the required **51% by 2030** (compared to GHG emission levels from 2018 – baseline)
- set us on a path to reach net-zero emissions by no later than 2050

The CAP plan will drive the adaptation and mitigation measures required at local level

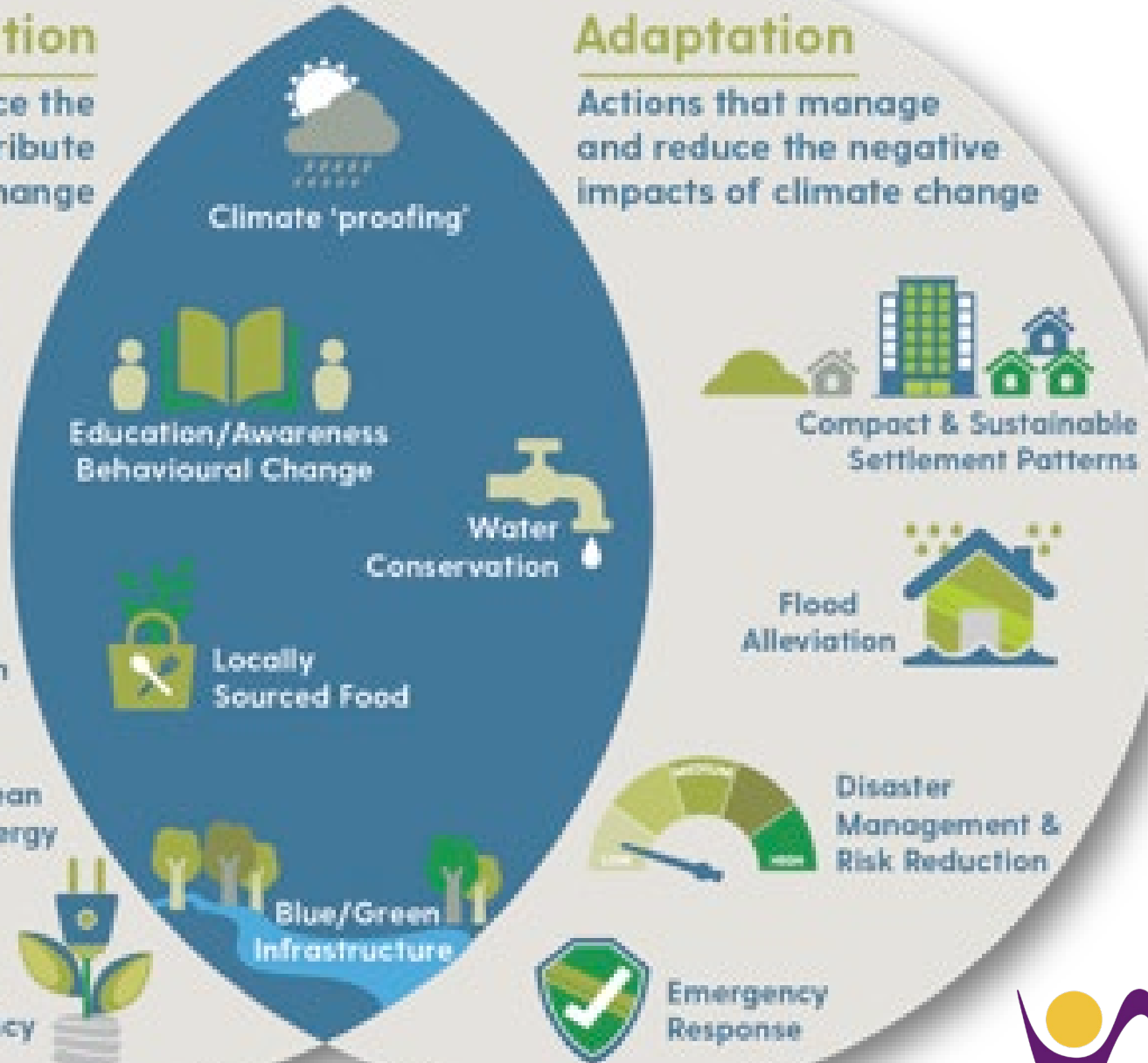
Mitigation

Actions that reduce the emissions that contribute to climate change



Adaptation

Actions that manage and reduce the negative impacts of climate change



Education/Awareness
Behavioural Change

Water Conservation

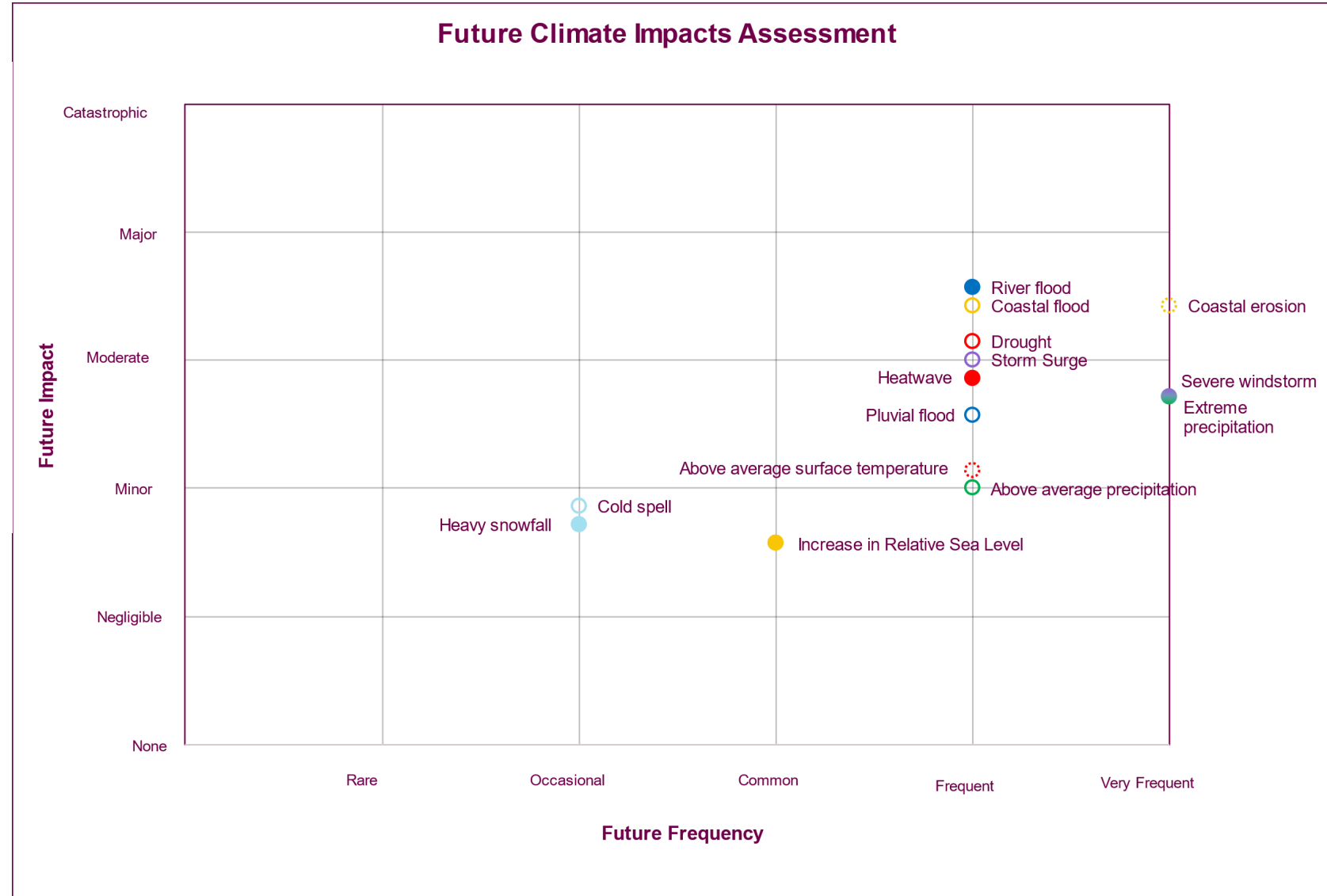
Locally Sourced Food

Blue/Green Infrastructure

Weather Risks

Key Climate Hazards identified for County Wexford:

River Flooding
Coastal Flooding
Coastal Erosion





Adaptation

Local authorities can:

- continue their proactive engagement on flood risk management
- source funding and investment

Climate Change Risk Assessment can:

understand the likelihood of current and future climate hazards

Mitigation



Wexford Co. Co. prompt and promote local responses via:

- Spatial planning
- Infrastructural provision
- Housing
- Transport
- Local Economic and Community Development

MITIGATION - TRANSPORT

- Active Travel
- Wexford Co. Co. Fleet Management
 - Transitioning LGV fleet to EV's
 - HGV's - investigate using HVO (HydroTreated Vegetable Oil) as a direct replacement for Road Diesel

National Transport Targets

500,000 daily sustainable travel journeys by 2030 through major public transport projects such as **BusConnects**, **Connecting Ireland**, the expansion of **rail services** and **cycling** and **walking** infrastructure

Expand **electrification** of **bus** and **rail** fleets with **1500 electric buses** by 2030

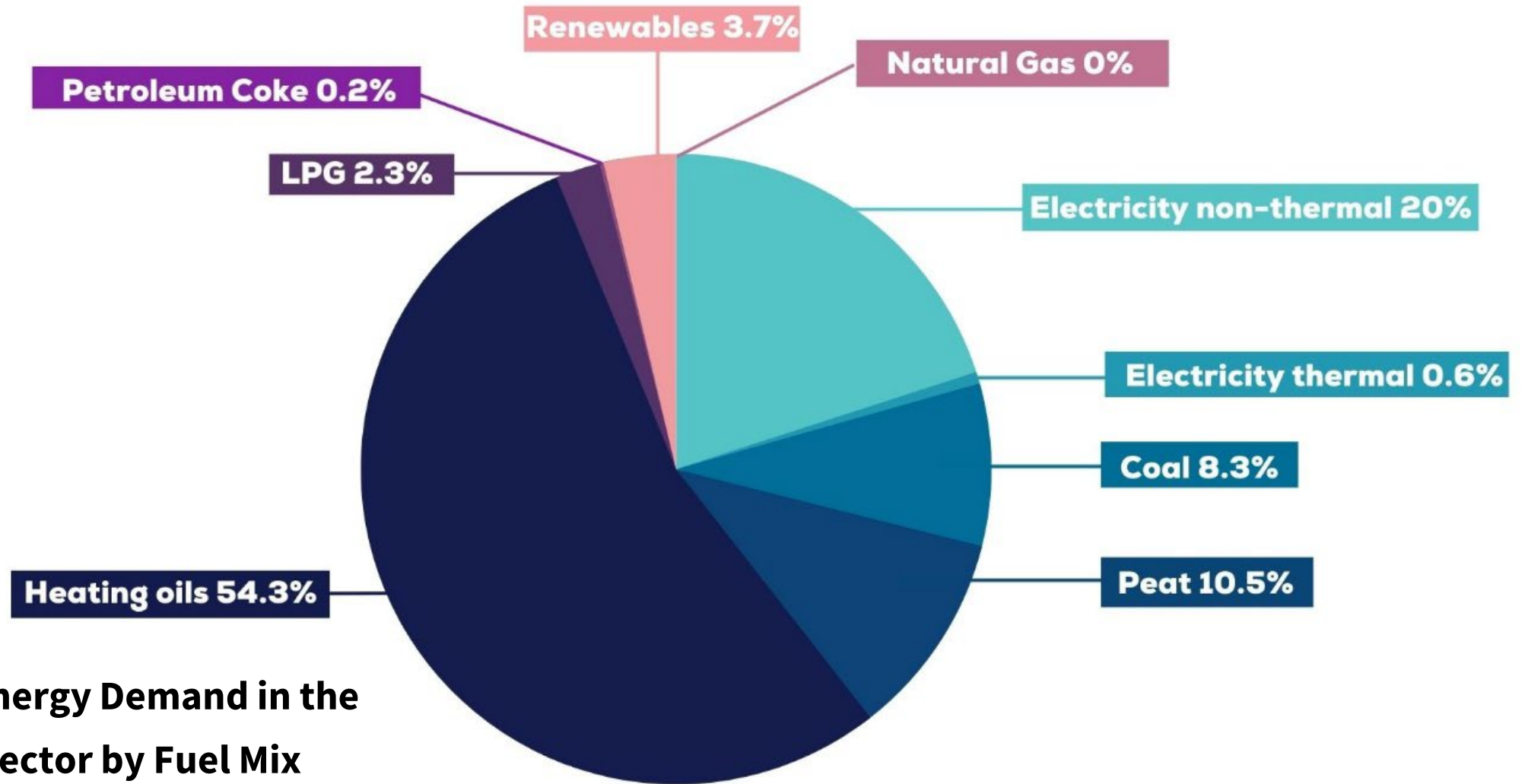
Increase the **use of biofuels** in transport

Transport



RESIDENTIAL in County Wexford

Total GHG emissions from Residential Sector (2018) = 433.9 ktCO₂eq.



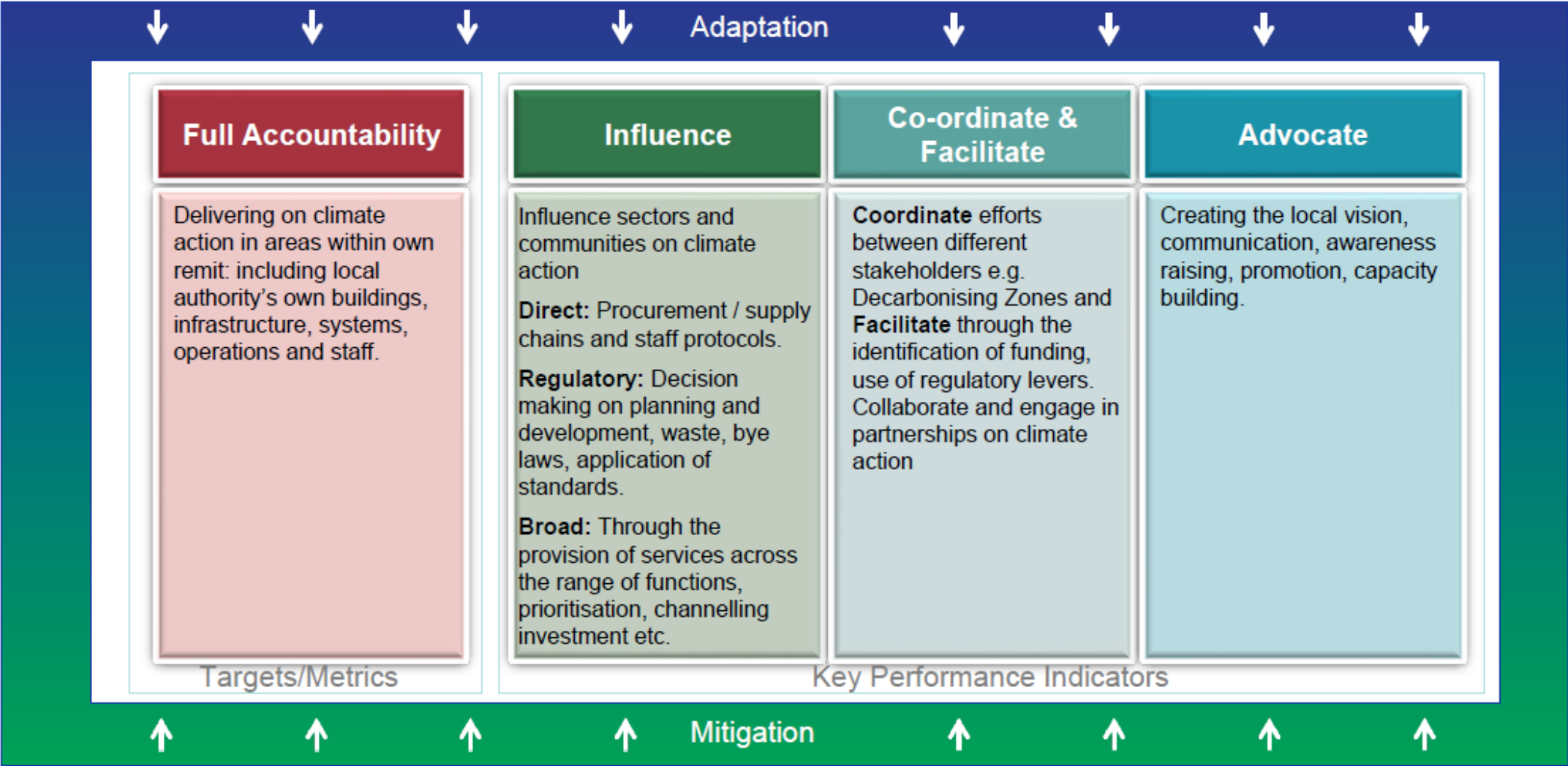
Share of Total Energy Demand in the Residential Sector by Fuel Mix

MITIGATION: 100% of Wexford County Council new-build houses delivered to NZEB standard since Q1 2018

Retrofit of older housing stock to A energy ratings



The Remit of the Local Authority





Comhairle Contae
Loch Garman
Wexford
County Council

DRAFT
Wexford County
Council
Climate Action Plan
2024-2029



- 5 Year plan 2024-2029
- 132 actions
- 5 Areas of Action
- Mitigation
- Adaptation
- Biodiversity



County Wexford GHG Emissions & Energy Consumption Per Sector 2018



Manufacturing
16.4% of Total Emissions
Total energy used 21.37 GWh
Total Emissions 403.18 ktCO₂eq

LULUCF
7.2% of Total Emissions
Total Emissions 403.18 ktCO₂eq

Wexford County Council
0.2% of Total Emissions
Total energy used 21.37 GWh
Total Emissions 6.05 ktCO₂eq



Residential
17.6% of Total Emissions
Total energy used 1,468.11 GWh
Total Emissions 433.88 ktCO₂eq

Waste
1.2% of Total Emissions
Total Emissions 28.86 ktCO₂eq



Industry
0.6% of Total Emissions
Total Emissions 14.55 ktCO₂eq



Transport
17.4% of Total Emissions
Total energy used 1,619.44 GWh
Total Emissions 428.25 ktCO₂eq

Agriculture
39.4% of Total Emissions
Total energy used 163.22 GWh
Total Emissions 968.15 ktCO₂eq



Goals of the Plan

- 51% Reduction in Greenhouse Gas Emissions by 2030
- 50% Reduction in Energy Consumption
- Support, Influence & Facilitate the public, communities and businesses to reduce their own emissions



Climate Action Plan – the actions

Natural Environment and Green Infrastructure							
Goal C: Protect and enhance the natural environment in County Wexford to support biodiversity, mitigate against climate change and reduce the negative impacts of climate change.							
No.	Action	Adaptation Mitigation	KPI	Lead Dept & Partners	Timeframe	Dependencies	DECA Goal Objective
C8	Explore feasibility of expanding the early warning river water level alert currently in place to all flood risk areas in the County to enhance resilience.	Adaptation	Number of additional rivers with early warning alerts installed	Environment Office of Public Works Environmental Protection Agency	Q1, 2025	Funding availability	3.1

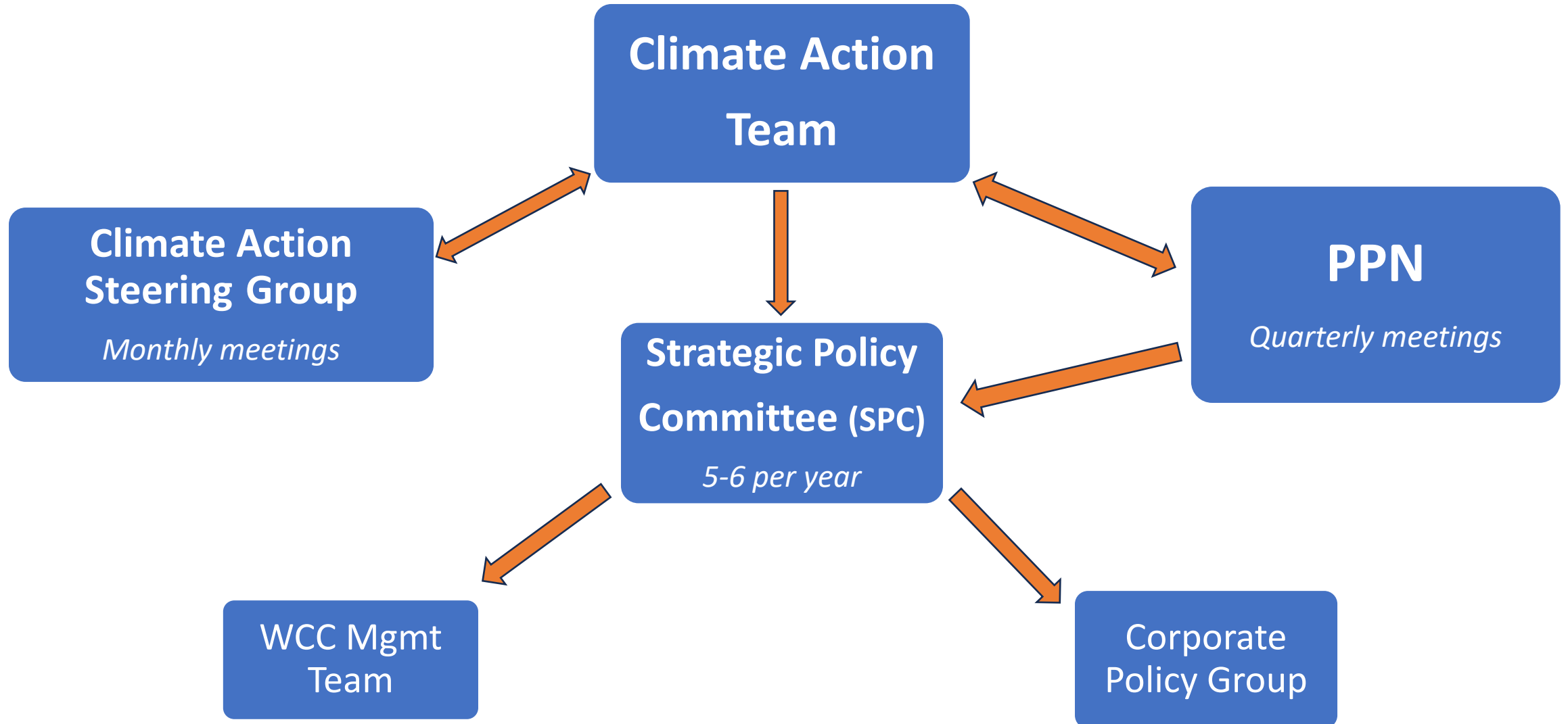
Communities, Resilience & Transition							
Goal D: Mobilise Climate Action, increase resilience and a just transition in Local Communities							
No.	Action	Adaptation Mitigation	KPI	Lead Dept & Partners	Timeframe	Dependencies	DECA Goal Objective
D1	Encourage community groups to pursue climate action projects at local level through the Community Climate Action Programme (CCAP) and support & facilitate them in accessing funding through various channels/initiatives	Adaptation & Mitigation	Number of funding applications made Number of funding applications approved Number projects completed (CCAP) Number of communities engaged in climate action (Community Section)	Environment Community Groups	2025 for CCAP Ongoing for other funding programmes	Participation rates of Community Groups Funding availability	4.3

Climate Action – Local Authority structures

Climate Change, Biodiversity & Environment Strategic Policy Committee (SPC)

- SPCs work alongside the Elected Representatives in contributing to and developing Council policy in a spirit of partnership.
- 3 x PPN reps
- Other reps: business, farming, trade union

Communication & policy



PPN Engagement

- PPN reps on Environment SPC
- Co-ordination with Climate Action Thematic Group
- Proposing quarterly meetings with Climate Action Team
- Information sharing (*funding, events, etc*)
- Support from Community Climate Action Officer



Empower everyone to help deliver on our **goal of a climate neutral economy by 2050**

Improve climate literacy by promoting understanding of climate change through **education** and **communications**

Increase number of **sustainable energy communities** to 1500

Citizen Engagement and Community Leadership





Wexford Community Climate Action Programme

Supporting Wexford to build
low carbon communities



Clinton Donovan
Community Climate Action Officer
Wexford County Council



Rialtas
na hÉireann
Government
of Ireland

Tionscadal Éireann
Project Ireland
2040



CLIMATE ACTION
WEXFORD

OUR COUNTY. OUR OPPORTUNITY. OUR FUTURE

OUR OPPORTUNITY!

- Reduce carbon emissions
- Contribute to the global effort
- Be prepared for the impacts of extreme weather
- Improve air quality
- Improve health & fitness

Lets do things better in our community!

Mitigation - LED Replacement - BEFORE



Mitigation - LED Replacement - AFTER



OUR OPPORTUNITY!

- Funding is available
- New technology to be embraced (renewable energy)
- Local food produce
- Communities coming together under a common interest = PPN Climate Action Thematic Group

Communities leading by example

- Solar & wind
- Insulation
- Community gardens
- Active travel
- Composting, food waste
- Circular economy



Community Climate Action Programme

- **Strand 1** administered by WCC (capital works) €669,000 for Co. Wexford
- **Strand 2** administered by Pobal (Climate Education, Capacity Building and Learning by Doing) – first round now closed



Community Climate Action Programme

- 100% grant funding
- Opening 13th December – 6th March
- 3 quotes for each element of works
- Competitive assessment
- Not-for-profit groups & clubs
- 18 months to carry out approved works

What is the Community Climate Action Programme for?

Projects must deliver a direct positive impact on climate change by **reducing greenhouse gas emissions** and/or helping communities **adapt to the consequences of climate change**.

DIRECT CLIMATE ACTION

➤ Reduce
Greenhouse gas emissions

➤ Increase
climate resilience

➤ Assist transition to
low carbon economy

Community Climate Action Programme

5 project themes



Community & Energy

- Lighting upgrade
- Insulation
- Renewable energy



Travel

- Bike repair
- Bike library
- eCargo bikes



Food and Waste

- Veg gardens
- Composting
- Fruit trees



Shopping and Recycling

- Swap shop
- Water filling stations
- Reusable coffee cups



Local Climate and Environmental Action

- Resilience measures
- Pollinator projects



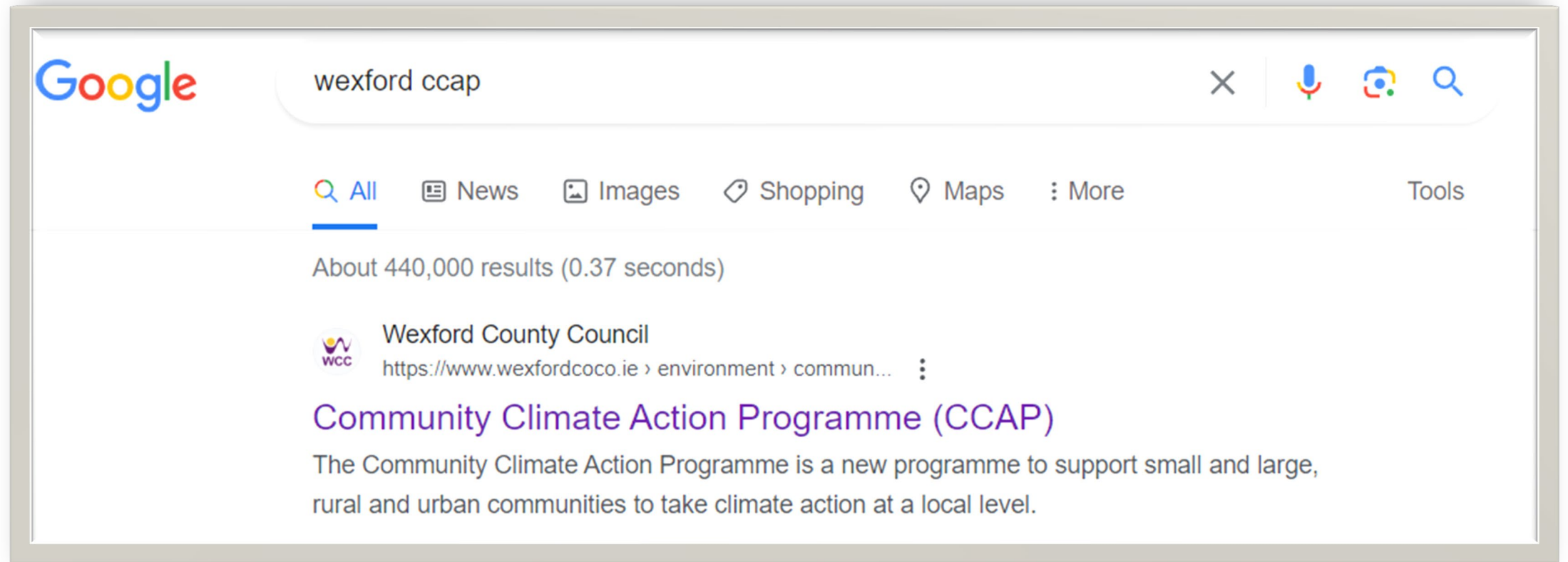
Before



After

MORE DETAILS....

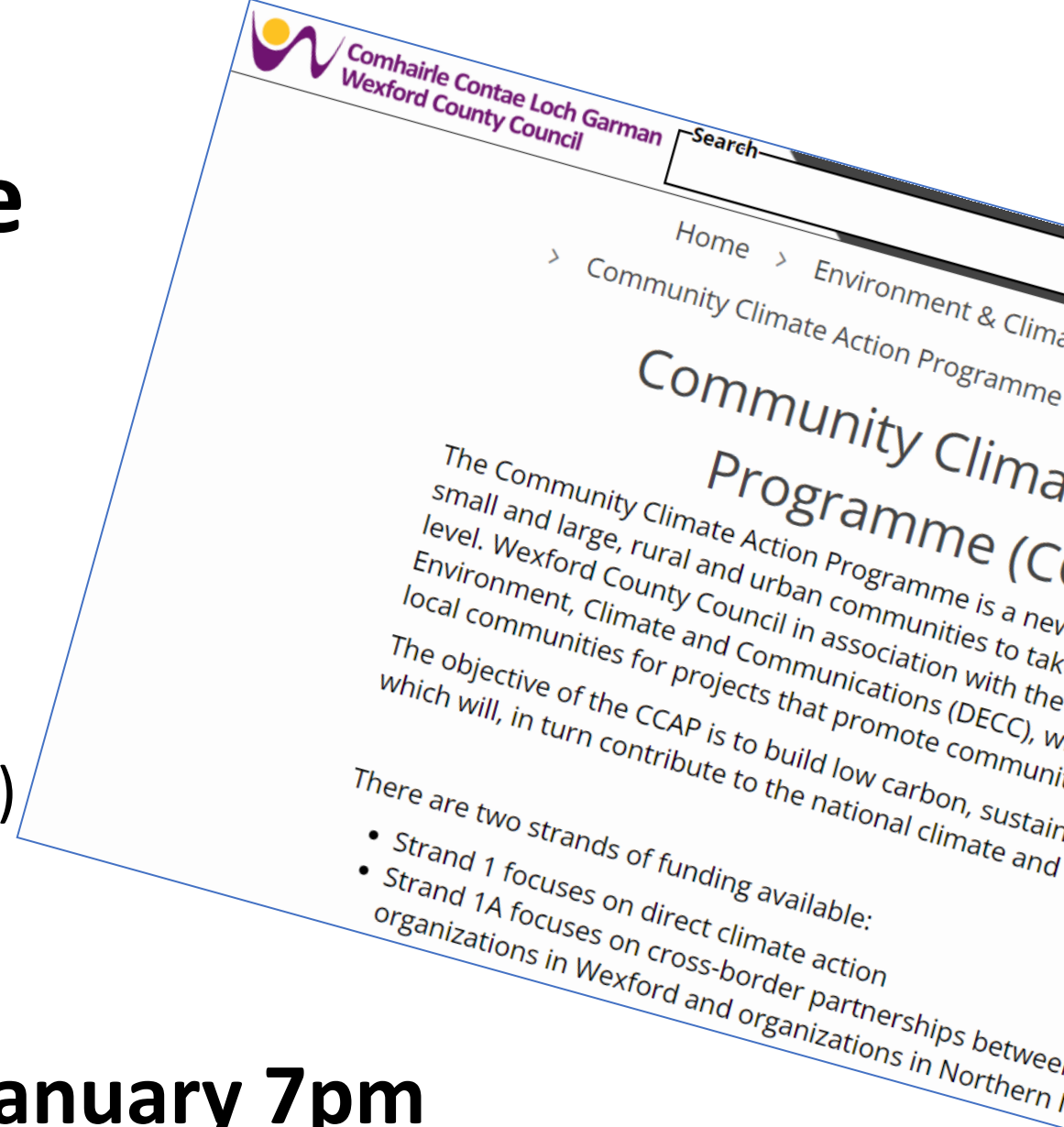
Google search: **Wexford CCAP**



The image shows a screenshot of a Google search interface. The search bar contains the text "wexford ccap". Below the search bar, there are navigation options: "All", "News", "Images", "Shopping", "Maps", and "More". The "All" option is selected and underlined. Below the navigation options, it says "About 440,000 results (0.37 seconds)". The first search result is from "Wexford County Council" with the URL "https://www.wexfordcoco.ie > environment > commun...". The title of the result is "Community Climate Action Programme (CCAP)" in purple text. The description below the title reads: "The Community Climate Action Programme is a new programme to support small and large, rural and urban communities to take climate action at a local level."

Wexford CCAP - webpage

- Details of the programme
- FAQs
- Application form tutorial (video)
- Link to the application form (from 13th Dec)



Online webinar Wednesday 17th January 7pm

Get on the Climate Action mailing list!

Climate Action Mailing List

 **Comhairle Contae Loch Garman**
Wexford County Council

First Name*

Surname*

Email*

I'm not a robot

 reCAPTCHA
Privacy - Terms

[Privacy Policy](#)

Subscribe

HERE'S HOW YOU CAN HELP TODAY

Did you know that there will be a mattress amnesty at our county recycling centres in Holmestown, Enniscorthy, Gorey and New Ross in the coming weeks?

For the €2 entrance fee you can get rid of up to 3 mattresses and all the household recycling you can fit in your car.

information

 **CLIMATE ACTION WEXFORD**
OUR COUNTY. OUR OPPORTUNITY. OUR FUTURE

Hello Clinton Donovan

Welcome to our first Climate Action Newsletter. We will aim to send these out to you once a month to let you know what the Cteam is up to and about climate action in Wexford.

In this installment meet our C Plan and upcoming fund suggestion for an a

get updates on the Climate Action community climate action. And our

What projects would your community do, representing what themes?



Home/Energy



Travel



Food and Waste



Shopping and Recycling



Local Climate and Environmental Action

Next step - project planning

Clinton Donovan

Community Climate Action Officer

Tel: 053-9196443 087-2139870

climateaction@wexfordcoco.ie