

An aerial photograph showing a coastal town with a golf course in the foreground. The town is built on a narrow strip of land between the sea and inland fields. The golf course is green and well-maintained, with several holes visible. The sea is a deep blue, and the sky is clear and bright.

# Climate Change, Biodiversity & Environment SPC

## Update on Coastal Matters

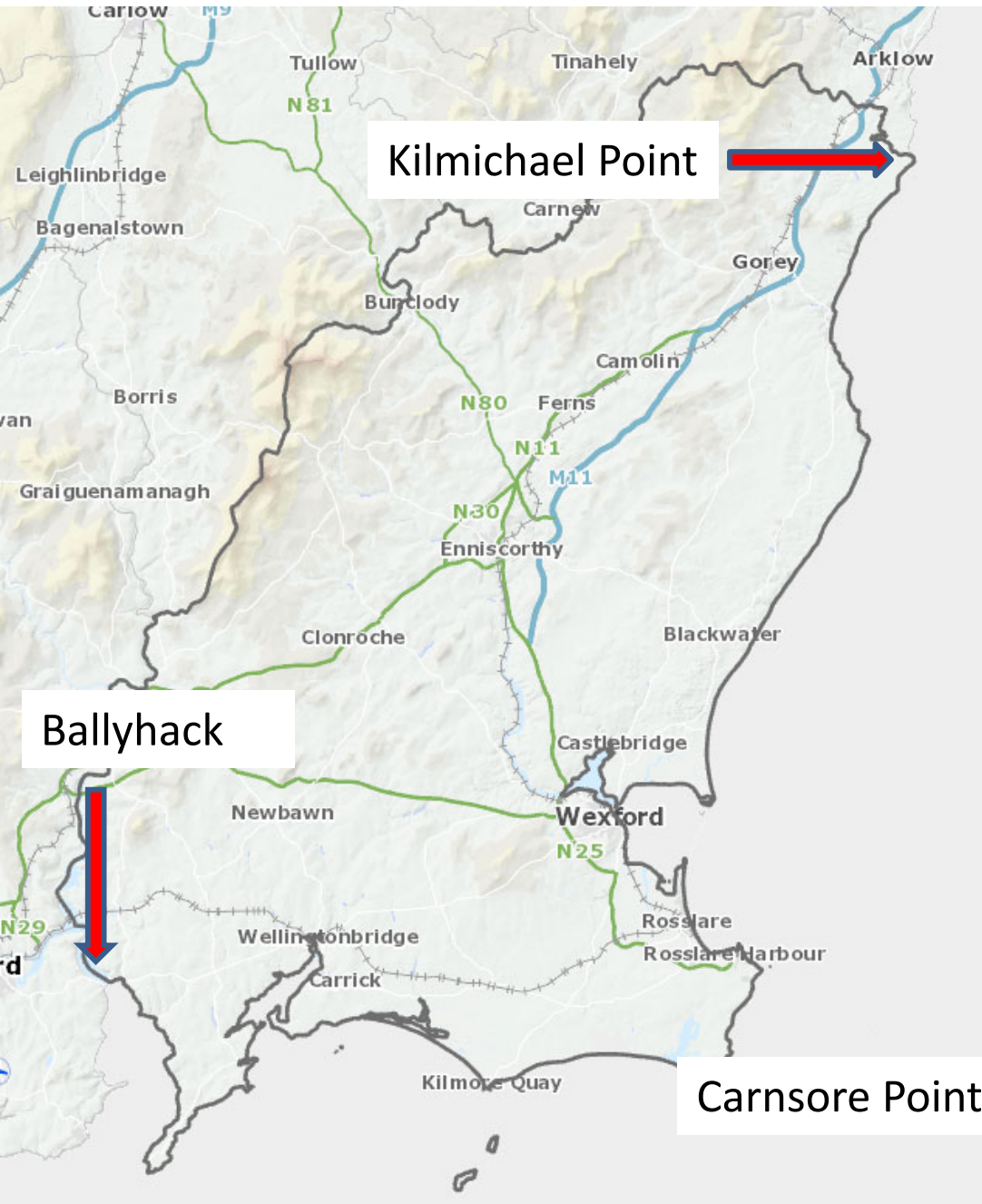
George Colfer, Coastal Engineer  
27<sup>th</sup> April 2023

## Key Update

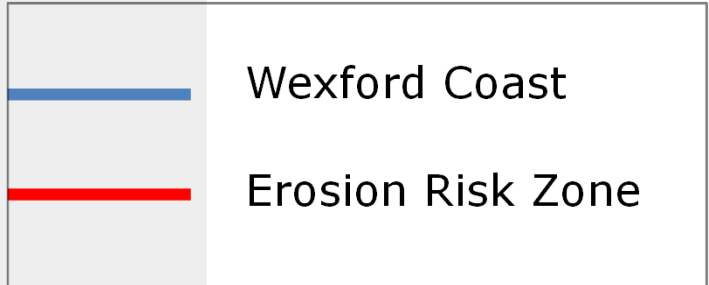
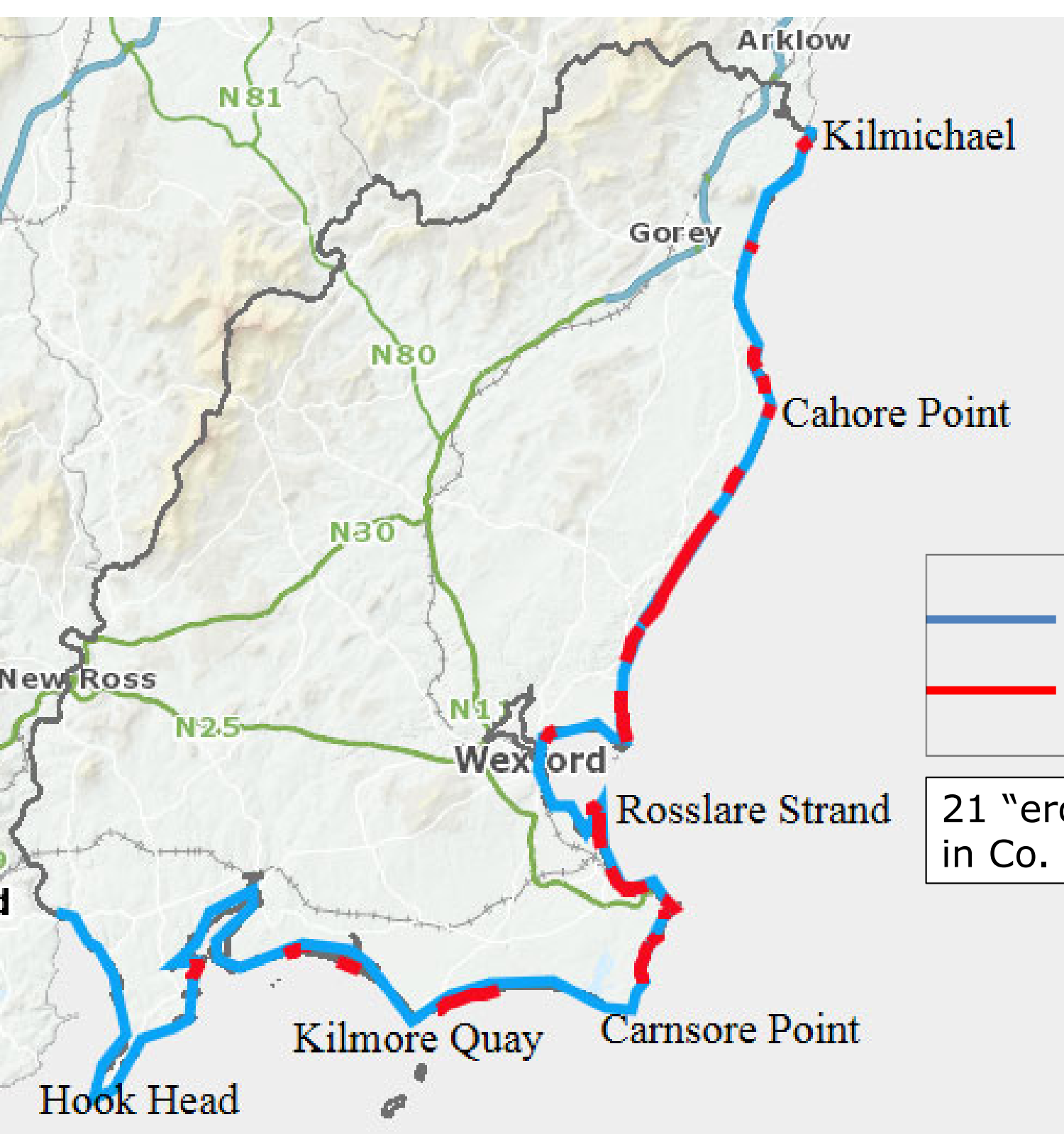
Special Council  
Meeting 11<sup>th</sup> April  
2023 on Coastal  
Erosion, Coastal  
Flooding and Sea  
Level Rise.



# Overview



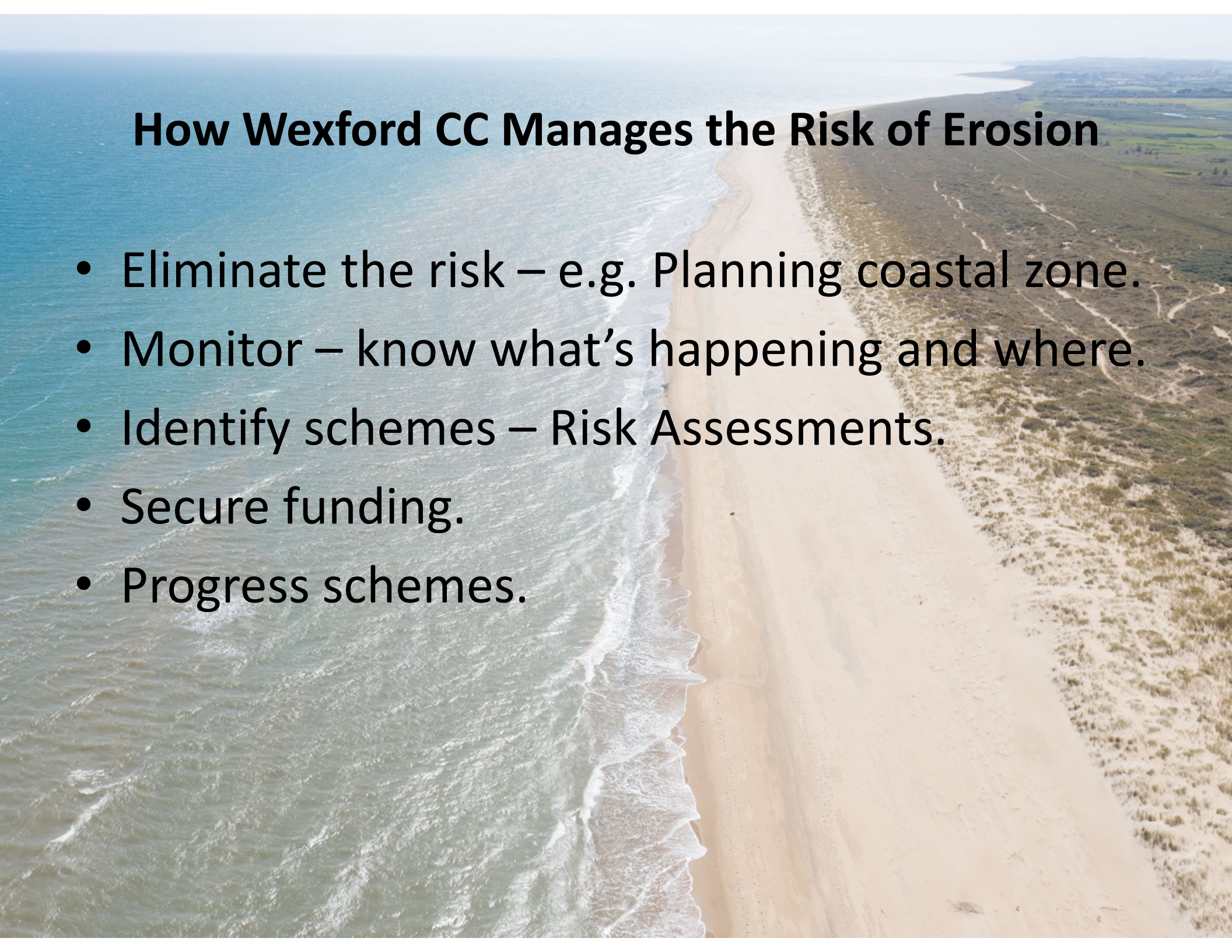
- Over 70 beaches
- 6 blue flag beaches
- 2 blue flag marinas
- 10 green coast beaches
- 11 harbours



21 "erosion risk zones" in Co. Wexford.

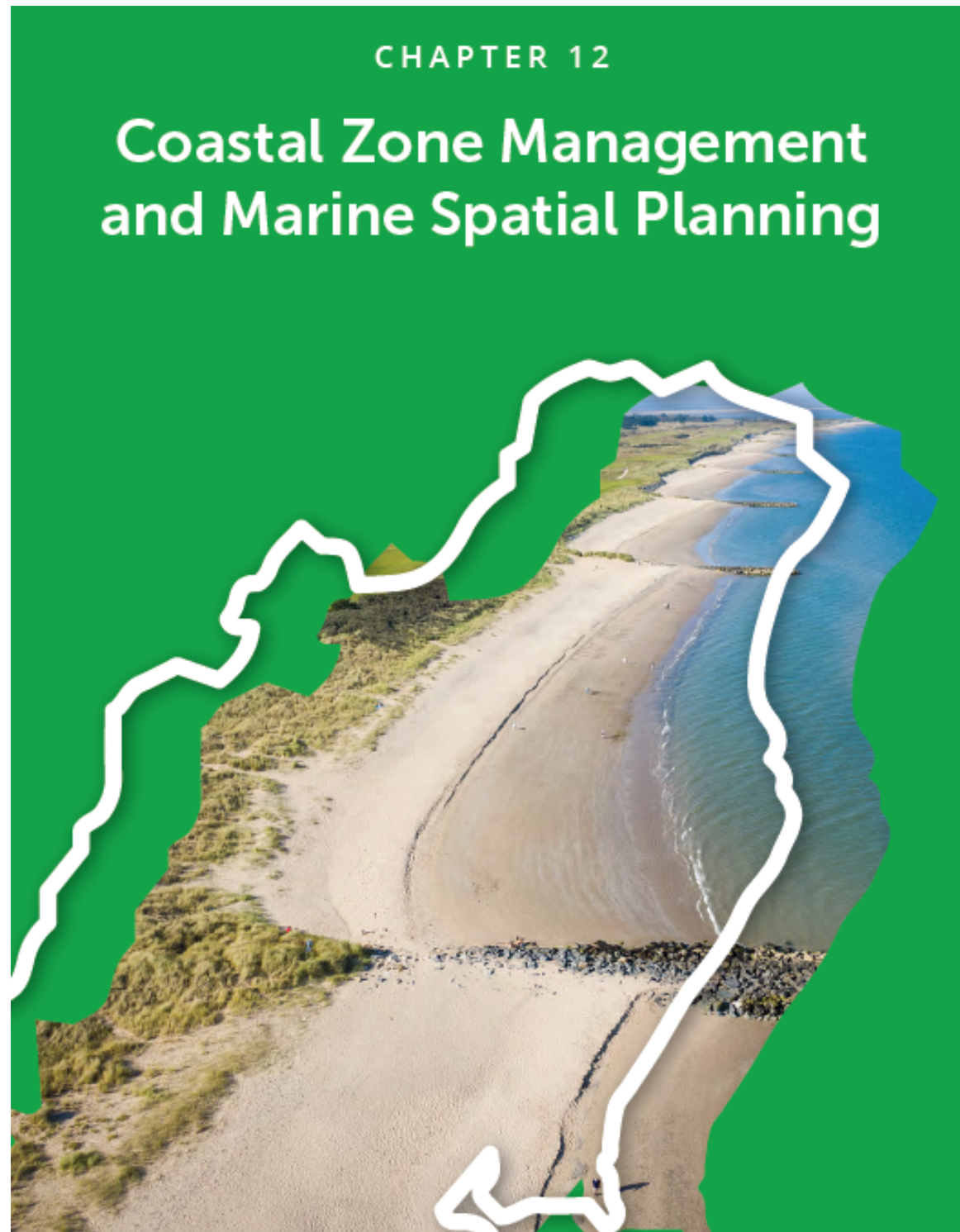
# How Wexford CC Manages the Risk of Erosion

- Eliminate the risk – e.g. Planning coastal zone.
- Monitor – know what's happening and where.
- Identify schemes – Risk Assessments.
- Secure funding.
- Progress schemes.



# Planning Context

- County Development Plan 2022 – 2028.
- Chapter 12
  - Coastal Zone Management and Marine Spatial Planning.
- Sets out the planning framework for future development in this area.
- Must consider impact of climate change.



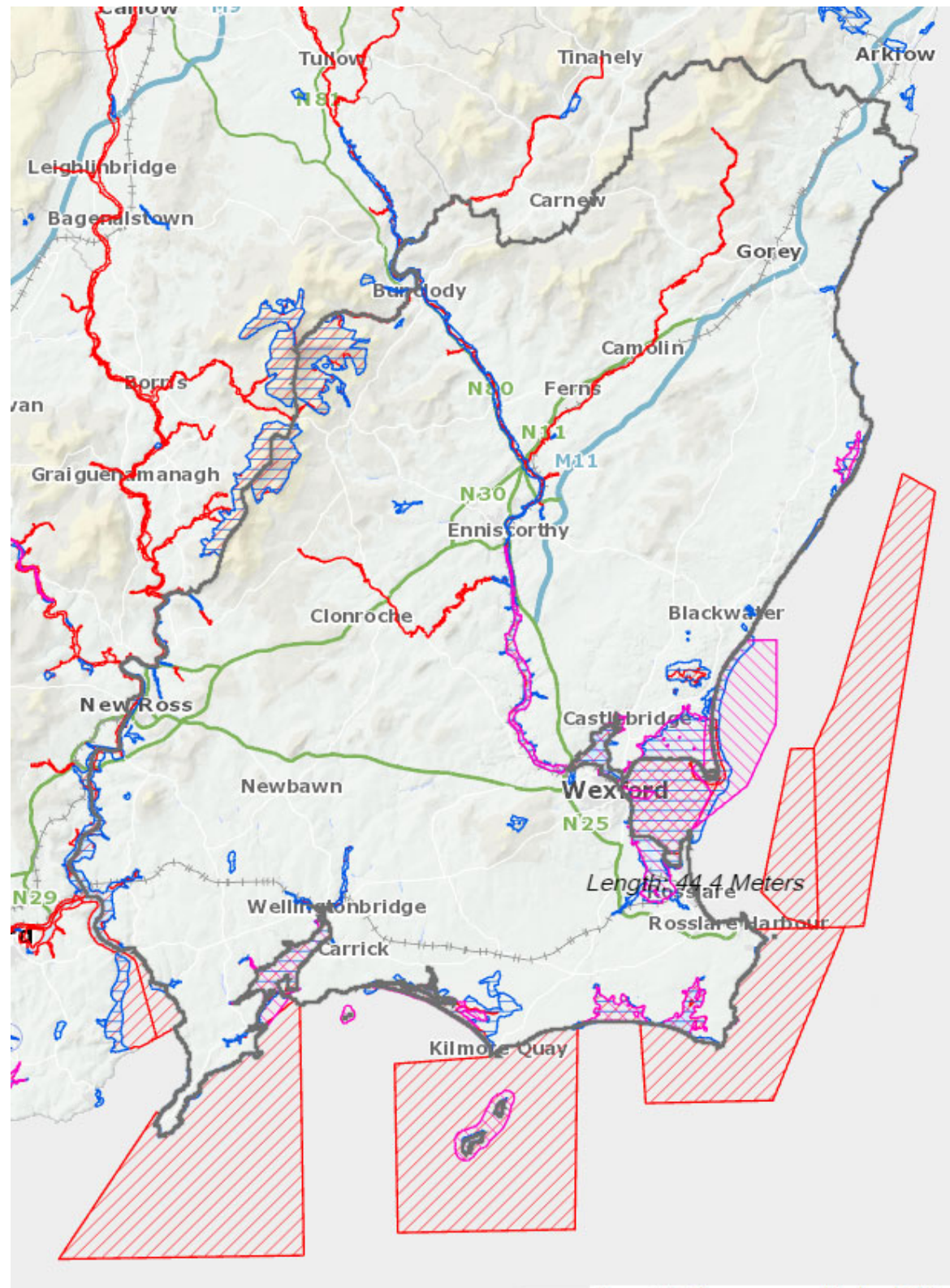
# Planning Context

- 2001 CDP: prohibit development within 50m of soft coast.
- 2022 CDP: Development (outside ex. settlements) prohibited within 250m from soft coast.



# Protected Areas

- Environmental areas.
- Natura 2000 sites.
- Work cannot have significant impact on these sites.





# Irish Coastal Protection Strategy Study (2011)

- National study by OPW.
- Coastal flooding and erosion.
- Coastal Engineer must consider this study when making recommendations on planning applications.



# Monitor Coastal Erosion

- Carried out by WCC Environment Dept.
- OPW monitor specific areas in county including Rosslare Strand.
- Other state agencies monitor on specific projects e.g. Geological Survey of Ireland.
- Provided for in County Development Plan.



# Monitor Coastal Erosion

- Visual / Photo



- GPS Survey



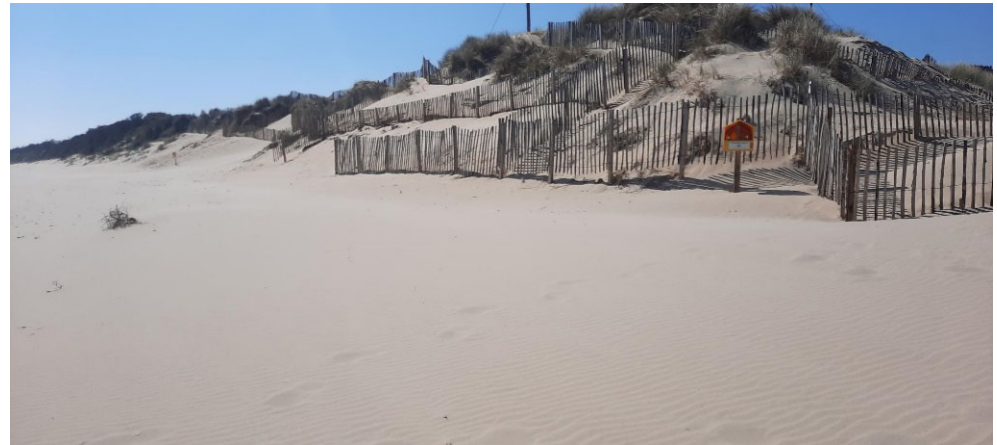
- Drone



# Observations – Morriscastle



November 2022



April 2023

# Observations – Cullenstown



April 2023



March 2023



April 2023



March 2023

# Preliminary Erosion Risk Assessments

- Seaview, Kilmore: coastal protection scheme being developed.
- Ballyhealy, Kilmore: currently doesn't comply with funding requirements. Under review.
- St. Helen's: currently doesn't comply with funding requirements. Monitor.



# Ballyhealy Risk Assessment

- Long term erosion rate is ca. 0.5 metre / year.
- Accelerated rate <math><1\text{m}/\text{year}</math>.



Figure 5-1 Coastline evolution; retreat of the coastline between 25<sup>th</sup> historic mapping (approximately 100 years ago) and present-day aerial photography – from Geohive



# Ballyhealy Risk Assessment



- Single house presently at risk.
- Featured on national tv.
- Cost / benefit currently does not comply with OPW funding requirement.
- Under review.

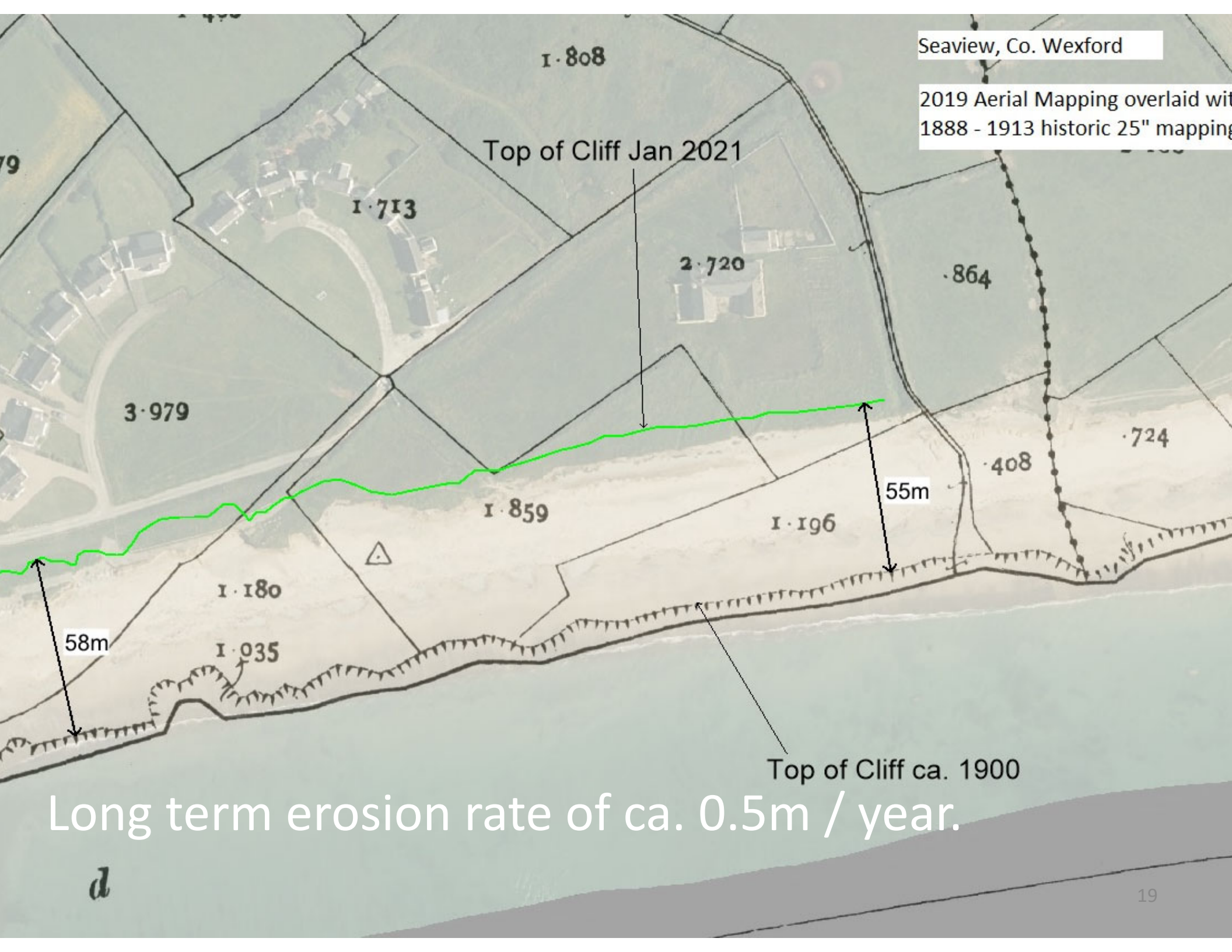
# Seaview



- 350m section of coast.
- 14 properties and access road at risk.
- Beach access.

Seaview, Co. Wexford

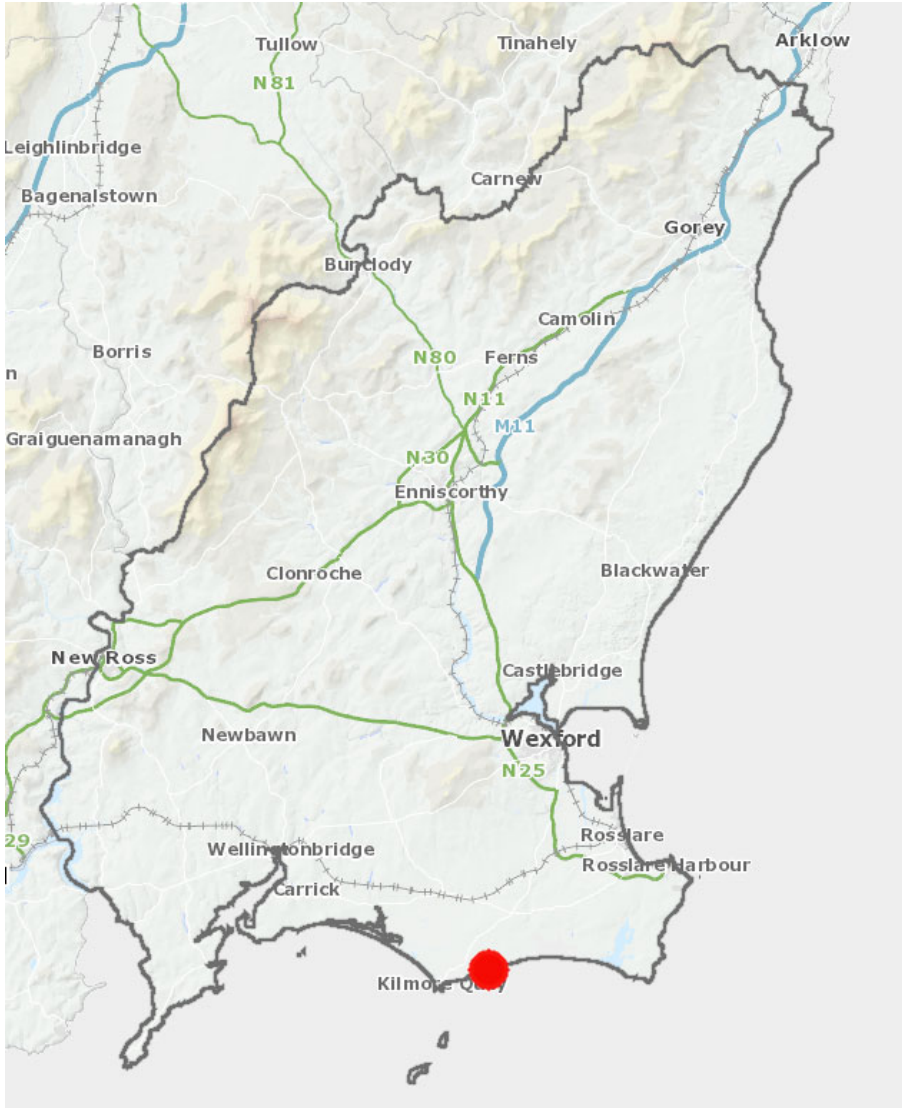
2019 Aerial Mapping overlaid with  
1888 - 1913 historic 25" mapping



Long term erosion rate of ca. 0.5m / year.

*d*

# Seaview, Kilmore



# Seaview

- Emergency works completed 2022.
- Planning app. to be submitted 2023 to extend the works.



# Seaview

- Planning application to ABP (re SAC).
- Must demonstrate that no significant adverse effect on SAC.



# Rosslare Coastal Erosion & Flood Relief Scheme (CEFRS)

- €8m scheme
- Nicholas O'Dwyer(NOD) Consultants.
- Steering group meetings every month – WxCC, OPW and NOD.
- Stage 1 – Prelim design and options





## BACKGROUND INFORMATION

Rosslare Strand in County Wexford is a popular tourist destination in the southeast which comprises of a low-lying village adjacent to an extensive coastal dune system and is fronted by a sandy beach. There are many notable tourist attractions in Rosslare including the blue flag beach, golf course and hotels.

The coastline at Rosslare Strand is of soft sand and has been subject to erosion over many decades. Since the 1950's a series of coastal protection measures have been introduced at various sections along the coastline to reduce the rate of erosion. These measures included rock revetments, rock and timber groynes and an extensive beach nourishment programme undertaken in the 1990s. Some of the existing protection measures, like the timber groynes, have now reached the end of their design life. In addition, there are areas identified along the coast that need to be protected in order to safeguard properties, businesses and the community. At the northern section of Rosslare Point, a number of

## Latest News

### Scheme commences ([News page](#))

The Scheme commenced on the 11th February 2022 with a site walkover attended by the project team members from Wexford County Council, The OPW, Nicholas O'Dwyer Consulting Engineers and NIRAS Coastal Engineers.

Project Newsletter No. 1 for the project has been



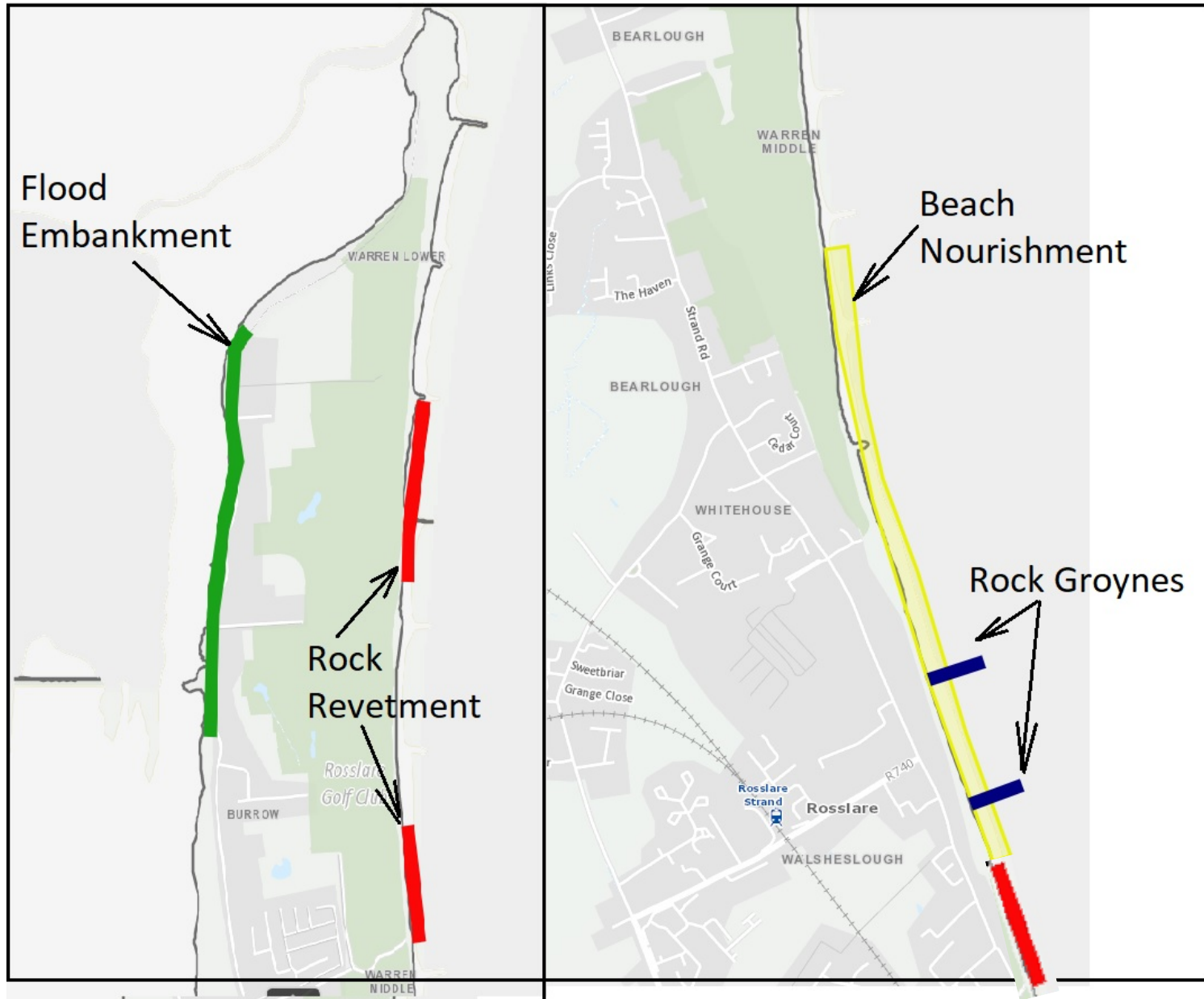
# Rosslare CEFRS

- Finalising key design parameters – e.g. water level, wave height.
- Public consultation days later 2023.



Remnants of 1950s timber groynes

# Erosion and Flood Options



# Wexford Town & Environs FRS

- €9.5m scheme.
- Reduce the risk of flooding to 179 properties.
- Consultants appointed.
- Scheme is managed by Special Projects.



# Kilmore Quay Meeting 30<sup>th</sup> March 2023



# Piers and Harbours

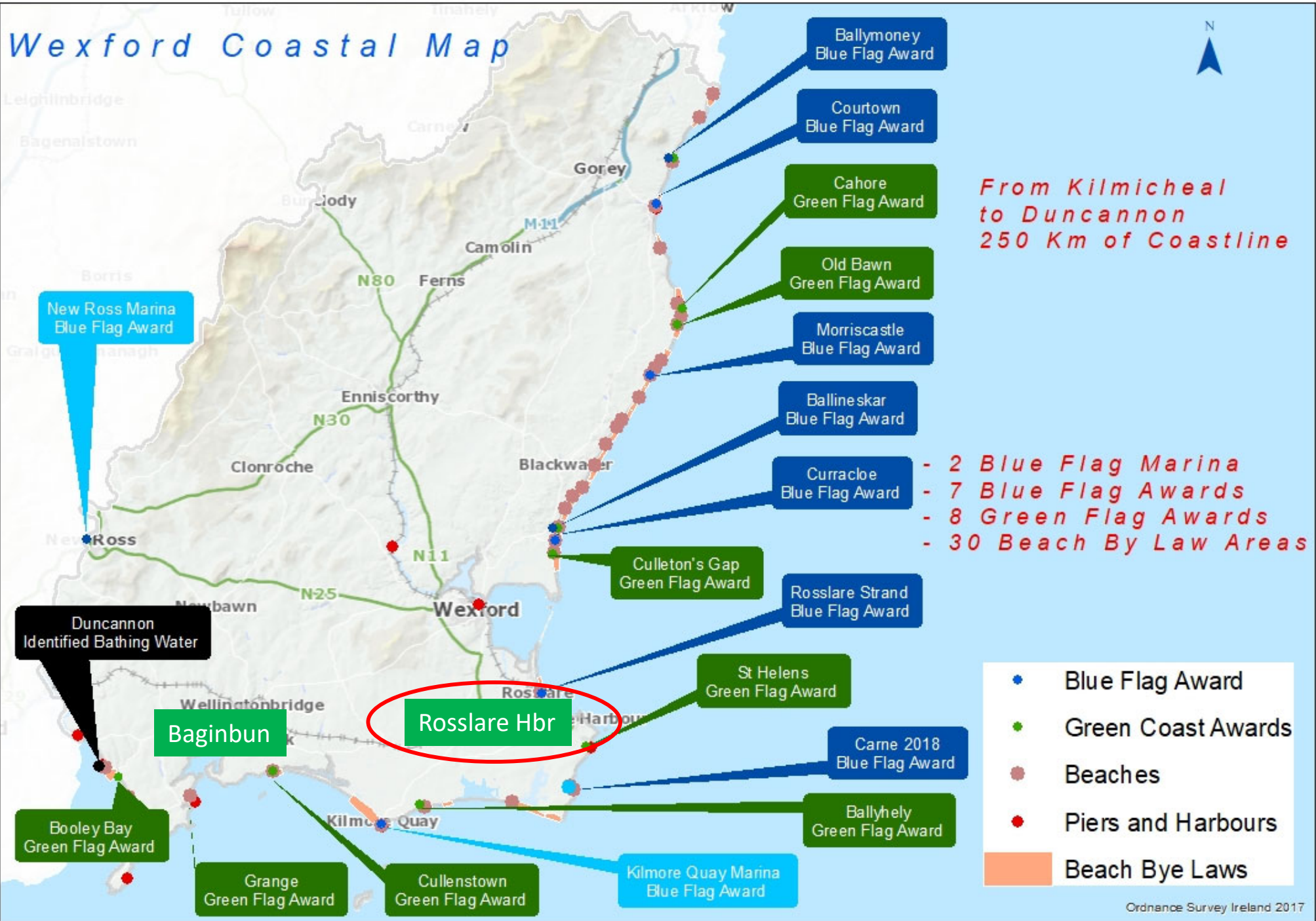
- Brexit Funded Scheme 2022-2023.
- 25 approved projects in Wx.
- Total est. cost of €1.95m.
- DAFM fund 95% of construction costs



# Beaches



# Wexford Coastal Map



Blue Flag Applications (8 no.)	Green Coast Applications (10 no.)
Ballymoney	Cahore
Morriscastle	Oldbawn
Ballinesker	Culleton's Gap
Curracloe	Rosslare Harbour
Rosslare	St Helen's Bay
Carne	Ballyhealy
Kilmore Quay Marina	Cullenstown
New Ross Marina	Grange
	Baginbun
	Booley Bay



# Blue Flag and Green Coast Awards





## Duncannon – Key Update

- New Wastewater Treatment plant in operation.
- Duncannon Blue Flag Farming and Communities Scheme 2018-2023. To improve water quality in 2 streams that flow on to the beach.

# Preparing for summer...

- 24 Lifeguards
- Water quality (300 samples)
- Beach bye laws
- Access
- Parking
- Traffic mgmt.
- Toilets
- Litter
- Etc.

## Welcome to Carne Fáilte go Carnach



**FODHLÍTHE TRÁ  
BEACH BYE-LAWS**

€75 / €2500

**GAN CAPAILL IDIR**  
10.00-20.00 hrs  
Meitheamh-Meán Fómhair agus  
Deireadh Seachtaine Saoire Baine

**NO HORSES BETWEEN**  
10.00-20.00 hrs  
1st June to 15th September  
and Bank Holiday Weekends

**CAITHFIDH MADRAÍ A BHEITH FAOI SMACHT ÉIFEACHTACH**  
DOGS MUST BE UNDER EFFECTUAL CONTROL

Fodhlíthe trá do Mhadraí ar Thráanna Brat Gorm

**Beach Bye-Laws for Dogs on Blue Flag Beaches**

NÍL MADRAÍ I LIMISTÉAR BRATACH GORM  
11.00-18.00 hrs  
1<sup>st</sup> MEITHEAMH GO 15<sup>th</sup> MEÁN FÓMHAIR  
(Iaistigh de mharcóirí patról an gharda tarrthála) seachas rochtain ar thrú leis an madra ar chéad chuig réimsí trádála eile.

11.00-18.00 hrs 1<sup>st</sup> JUNE TO 15<sup>th</sup> SEPTEMBER  
NO DOGS IN BLUE FLAG AREA within lifeguard patrol markers EXCEPT when accessing other beach areas AND dogs must be under effectual control at all times.

*Have Fun & Enjoy the Beach! Bíodh Spraoi & Bain Sult as an Trá!*

Déan scanadh anseo le do thoil le haghaidh tuilleadh sonraí ar fhodhlíthe nó déan teagmháil le Comhairle Contae Loch Garman ar 053 919600 nó tabhair cuairt ar [www.wexfordcoco.ie](http://www.wexfordcoco.ie)

Please scan here for more details on Wexford County Council Beach Bye-Laws 2022 or contact Wexford County Council on 053 919 6000 or visit [www.wexfordcoco.ie](http://www.wexfordcoco.ie)

Cionta agus plonóts (Ailt 39-47). Féadfaidh Foireann Údartha na Comhairle nó Gardaí Fodhlíthe a fhorheidhmiú.

Offences and penalties (Sections 39-47) Council Authorised Staff or Gardaí can enforce Bye-Laws

# In summary...

- Monitor the coast.
- Erosion and coastal flood schemes.
- Piers/Hbr Works.
- Beach mgmt.





Thank you.